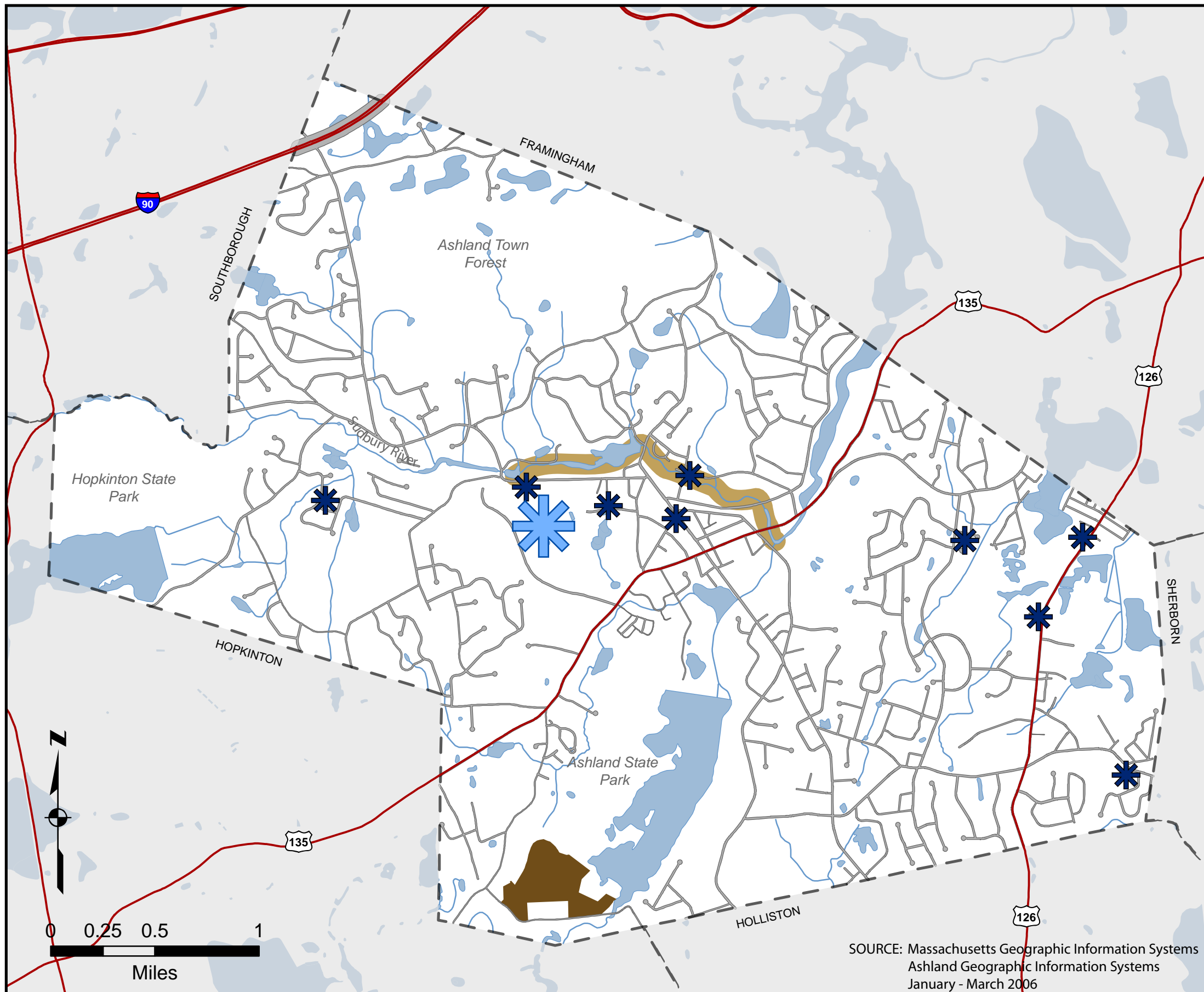


Map 4.10 Environmental Challenges

Ashland has ten contaminated sites classified as 21E brownfields by the Massachusetts Department of Environmental Protection. The Nyanza Chemical Company site has the highest levels of mercury contamination in Massachusetts and is listed as a Superfund site by the Environmental Protection Agency. Soil and groundwater contamination from this area has polluted portions of the Sudbury River.

The Aggregate Industries quarry next to Ashland State Park requires planning for remediation once mining operations cease.



Sudbury River Contamination



Nyanza Cleanup



Other 21E Sites



Future Quarry Remediation



Ashland, Massachusetts
Open Space and Recreation Plan 2006

SOURCE: Massachusetts Geographic Information Systems
Ashland Geographic Information Systems
January - March 2006

NOTE: Maps are for planning purposes only.
Actual conditions should always be field verified.