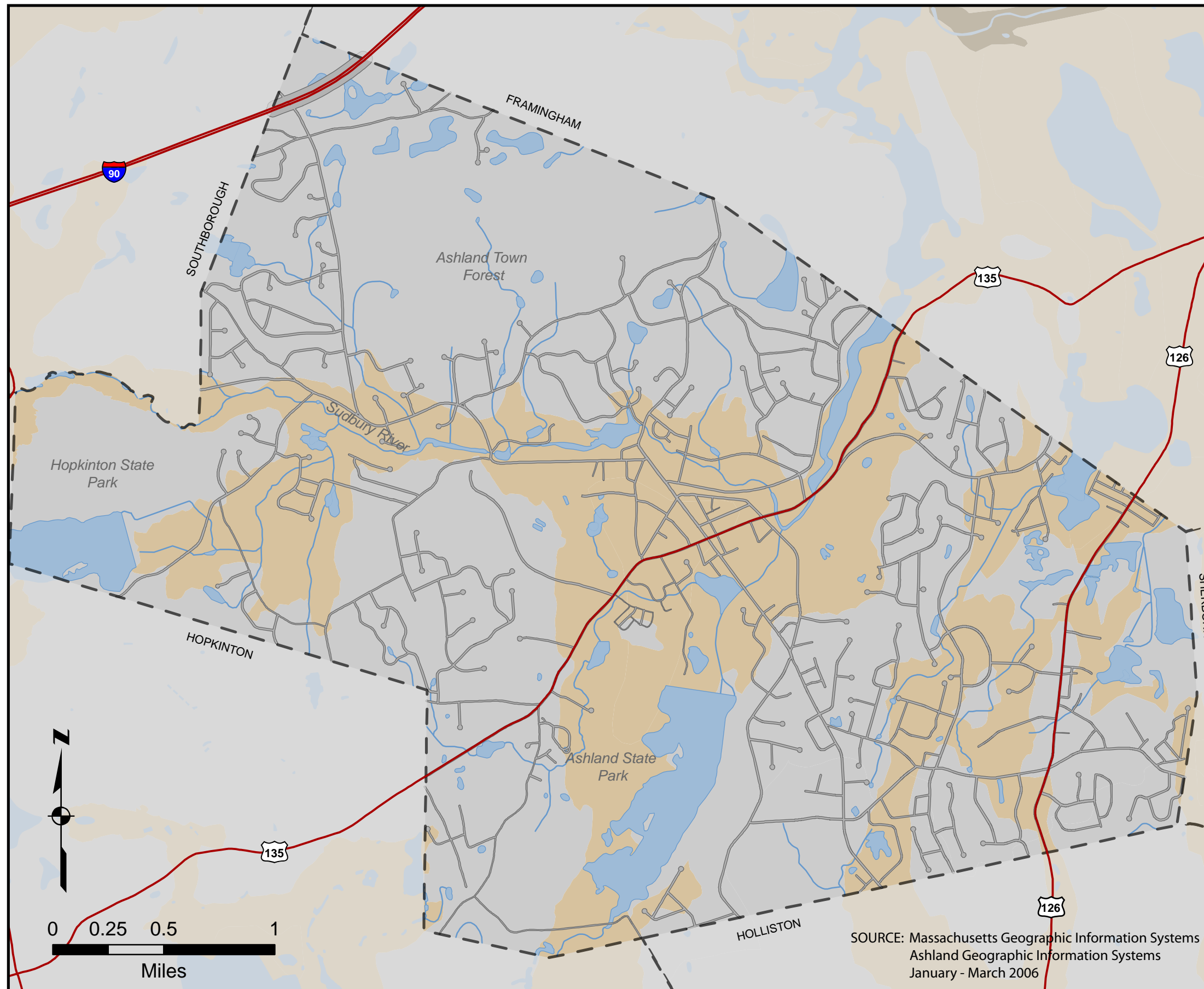


## Map 4.2 Surficial Geology

The material above Ashland's bedrock is composed of either sand and gravel or glacial till. The uplands of town are comprised of glacial till, which is a good foundation bearing material. However, till is often shallow to bedrock, making it poorly drained and costly to excavate.

The sand and gravel (or stratified drift) was laid down along Ashland's waterways by the streams and lakes of melting glaciers. These areas were the first in town to be developed due to their agricultural potential and ease of excavation.



Sand and Gravel   
Till or Bedrock

Ashland, Massachusetts  
Open Space and Recreation Plan 2006

SOURCE: Massachusetts Geographic Information Systems  
Ashland Geographic Information Systems  
January - March 2006

NOTE: Maps are for planning purposes only.  
Actual conditions should always be field verified.