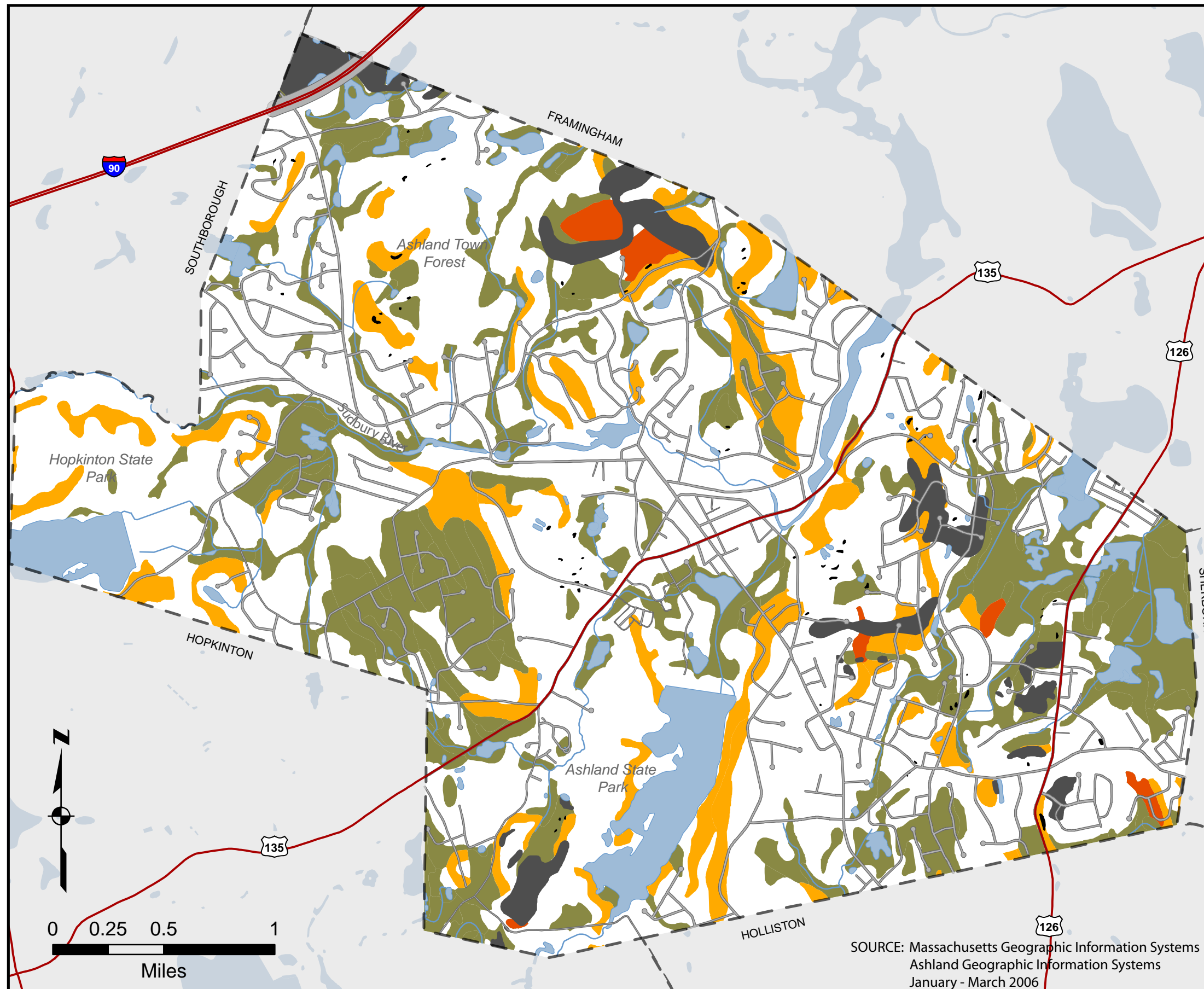


## Map 4.3 Soil Limitations

Development in Ashland is limited by hydric soils, steep slopes, thinly covered bedrock, and outcrops. These conditions do not necessarily preclude development, but the environmental impacts of developing in these areas should be carefully considered.



- Hydric Soils
- 15 to 25 percent slope
- 25 to 40 percent slope
- Thinly covered outcrops
- Surface bedrock

Ashland, Massachusetts  
Open Space and Recreation Plan 2006

NOTE: Maps are for planning purposes only.  
Actual conditions should always be field verified.

SOURCE: Massachusetts Geographic Information Systems  
Ashland Geographic Information Systems  
January - March 2006