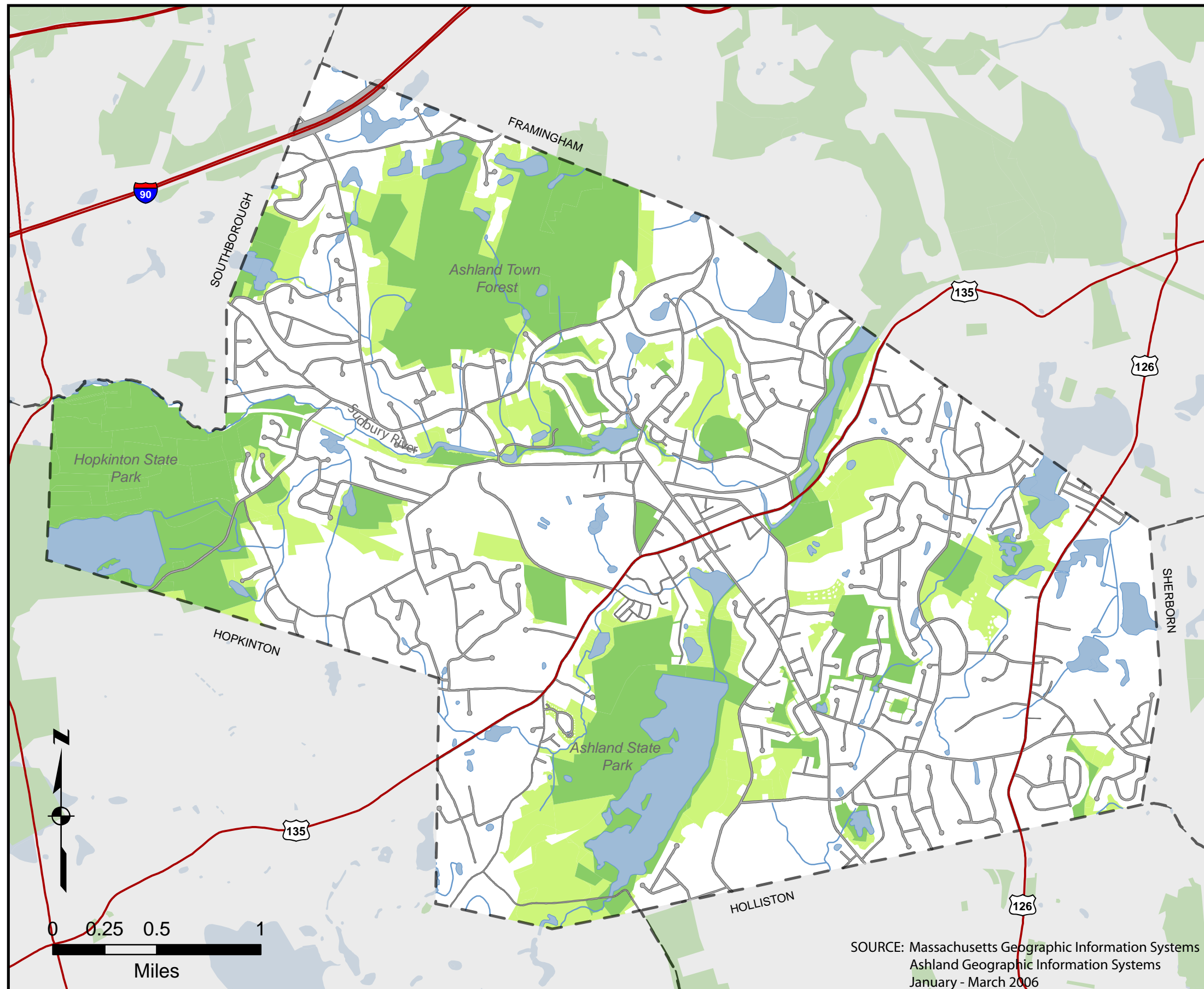


Map 5.3 Adjacent Lands

The value of existing protected lands can be greatly enhanced by protecting undeveloped adjacent lands. Such additions add to the volume of interior forest habitat required by many species. Such lands are especially valuable when they help provide connections between conserved lands or protect lands along trails or streams.

This map shows opportunities for expanding existing open space by highlighting undeveloped lands adjacent to permanently protected parcels.



Protected Open Space
Adjacent Lands

Ashland, Massachusetts
Open Space and Recreation Plan 2006

SOURCE: Massachusetts Geographic Information Systems
Ashland Geographic Information Systems
January - March 2006

NOTE: Maps are for planning purposes only.
Actual conditions should always be field verified.